

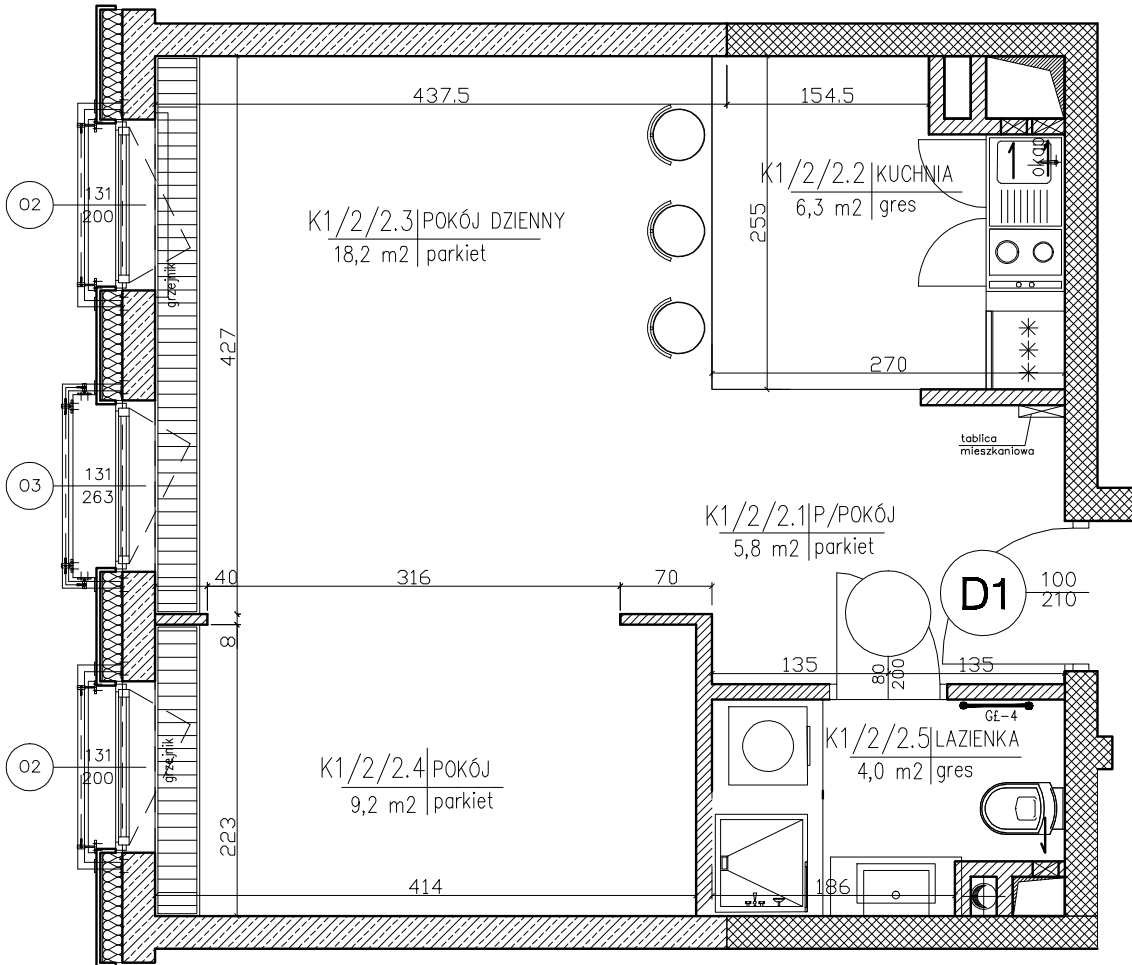
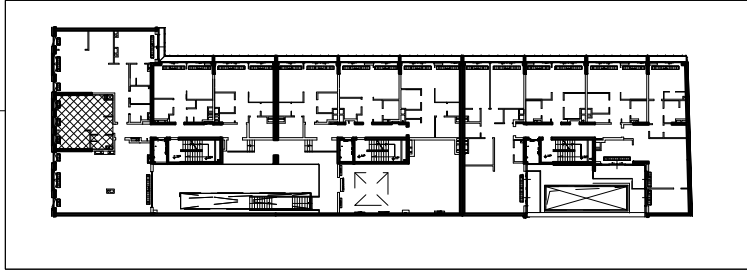
**INVESTMENT:
EMILI PLATER-APARTMENTS
Emilii Plater 10, WARSAW**

lokal numer: K1/2/2
apartment number

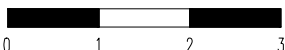
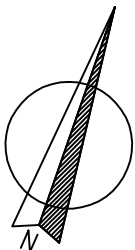
piętro: I
floor

klatka: I
staircase

powierzchnia : 43,50m²
sq.m



- K1/2/2.1- hol/hall - 5,90m²
- K1/2/2.2- kuchnia/kitchen - 6,30m²
- K1/2/2.3- pokój dzienny/livingroom- 18,20m²
- K1/2/2.4- sypialnia/bedroom- 9,20m²
- K1/2/2.5- lazienka/bathroom- 4,00m²



Investor: ENGEL - APARTAMENTY EMILII PLATER

POLAND, 00-024 WARSAW, ALEJE JEROZOLIMSKIE 44, PHONE: +48 22 433 69 30