

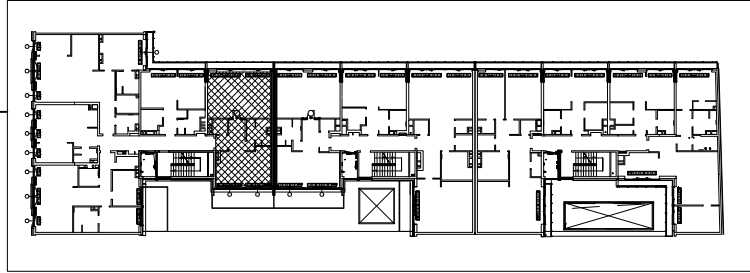
INVESTMENT: EMILII PLATER-APARTMENTS Emilii Plater 10, WARSAW

lokal numer: K1/3/5
apartment number

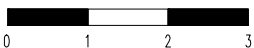
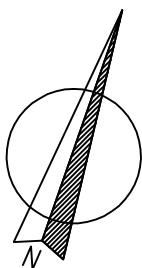
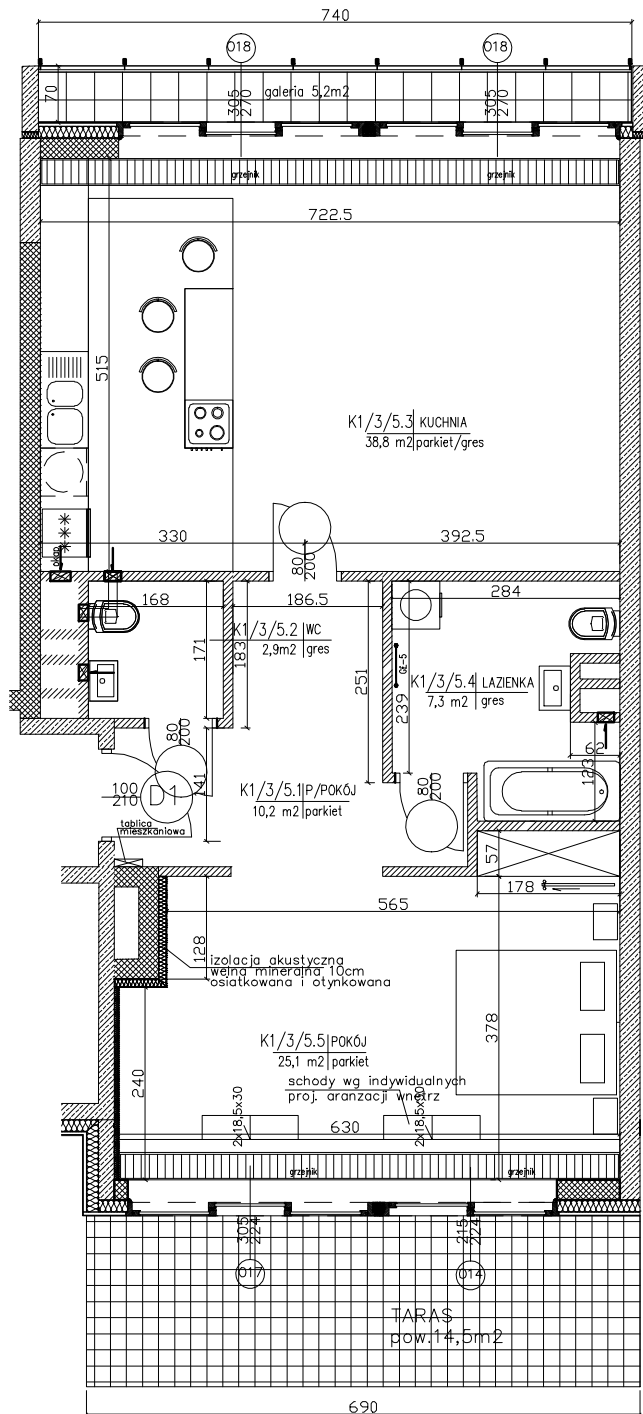
piętro: II
floor

klatka: 1
staircase

powierzchnia : 84,30m²
sq.m



- K1/3/5.1- p.pokój/hall- 10,2m²
- K1/3/5.2- toaleta/toilet- 2,9m²
- K1/3/5.3- kuchnia/kitchen - 38,8m²
- K1/3/5.4- łazienka/bathroom- 7,3m²
- K1/3/5.5- pokój/room- 25,1m²



Investor: ENGEL - APARTAMENTY EMILII PLATER

POLAND, 00-024 WARSAW, ALJE JEROZOLIMSKIE 44, PHONE: +48 22 433 69 30