

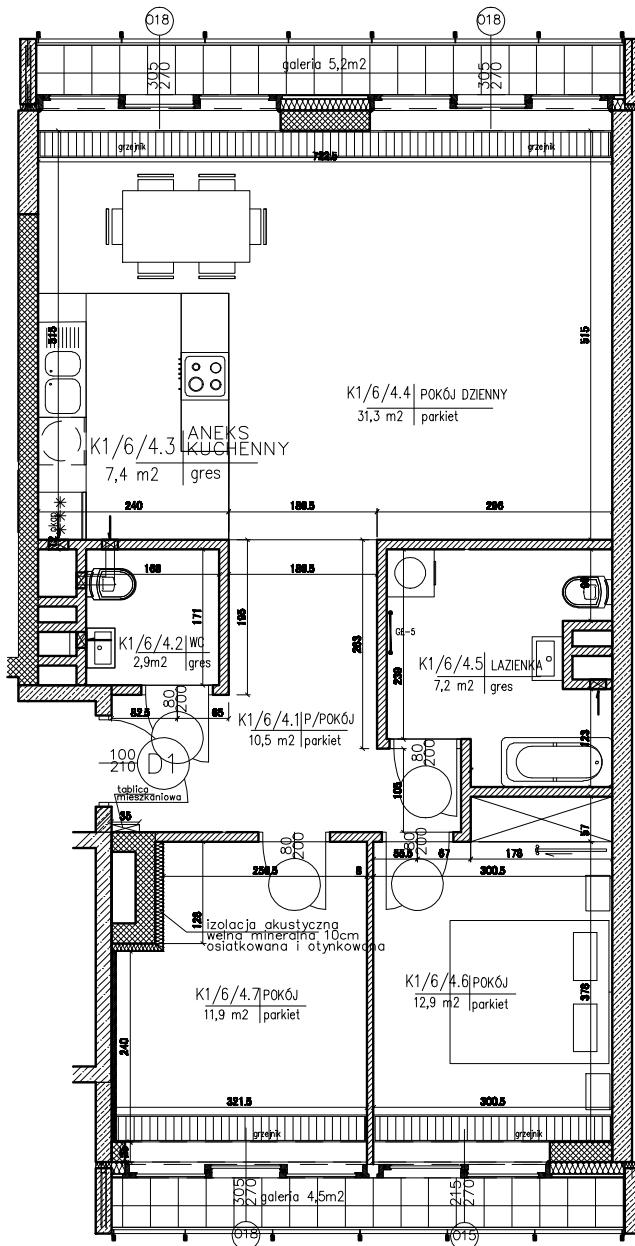
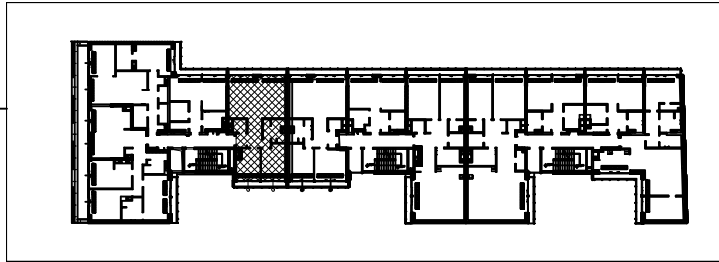
**INVESTMENT:  
EMILII PLATER-APARTMENTS  
Emilii Plater 10, WARSAW**

lokal numer: K1/6/4  
apartment number:

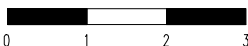
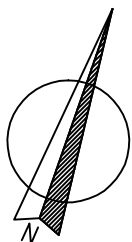
piętro: V  
floor:

klątka: I  
apartment:

powierzchnia : 84,10m<sup>2</sup>  
sq.m :



- K1/6/4.1- p.pokój/hall- 10,5m<sup>2</sup>
- K1/6/4.2- wc/toilet- 2,9m<sup>2</sup>
- K1/6/4.3- aneks.kuch/kitchen annex - 7,4m<sup>2</sup>
- K1/6/4.4- pokój dzienny/living room- 31,3m<sup>2</sup>
- K1/6/4.5- lazienka/bathroom- 7,2m<sup>2</sup>
- K1/6/4.6- pokój/room- 12,9m<sup>2</sup>
- K1/6/4.7- pokój/room- 11,9m<sup>2</sup>



**Investor: ENGEL - APARTAMENTY EMILII PLATER**

**POLAND, 00-024 WARSAW, ALJE JEROZOLIMSKIE 44, PHONE: +48 22 433 69 30**