

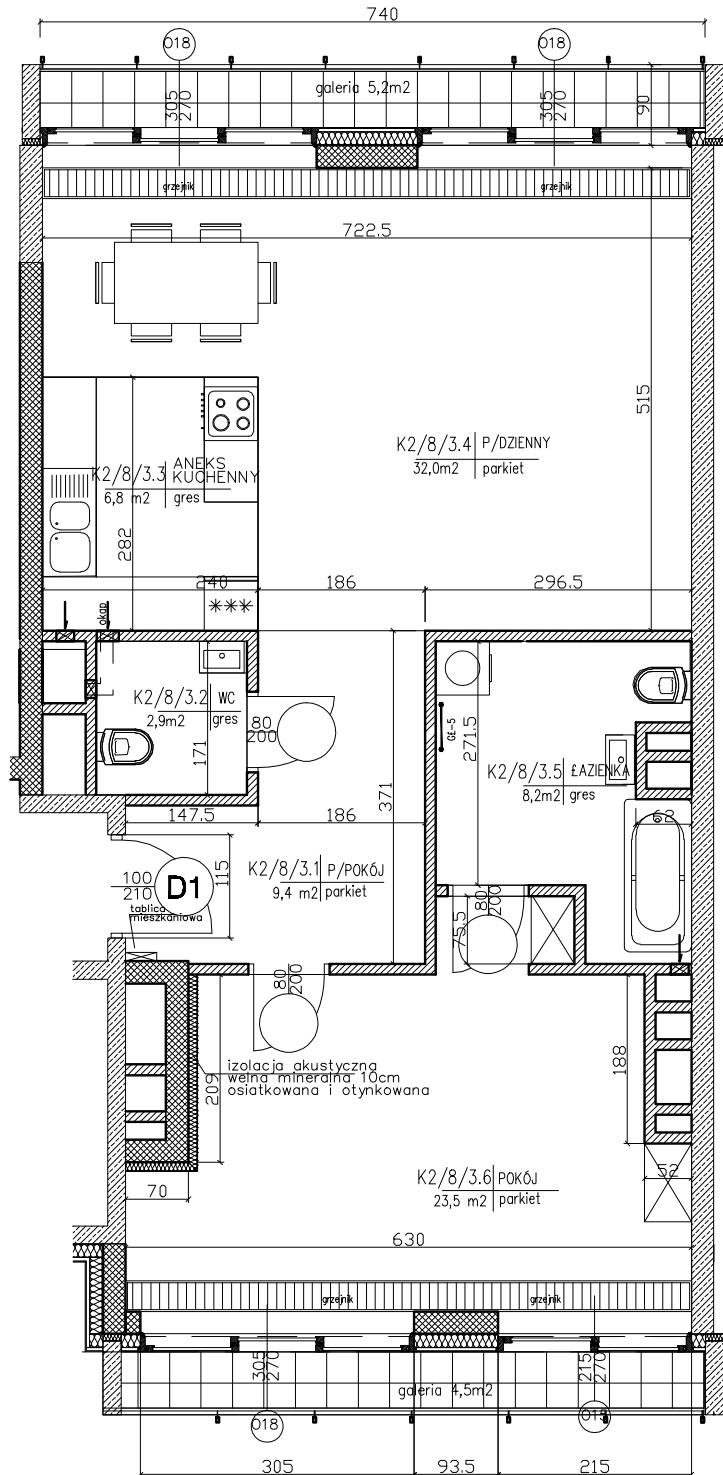
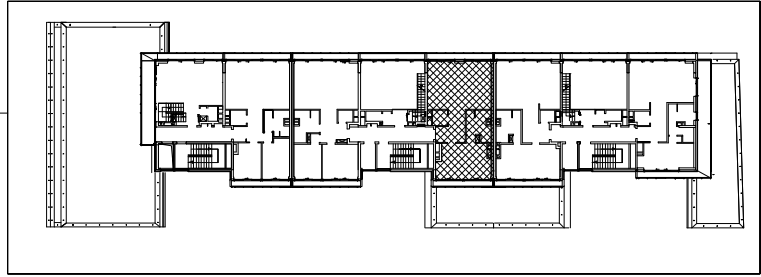
## INVESTMENT: EMILII PLATER-APARTMENTS Emilii Plater 10, WARSAW

lokal numer: K2/8/3  
apartment number

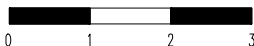
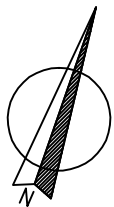
piętro: VII  
floor

klaska: 2  
staircase

powierzchnia : 82,80m<sup>2</sup>  
sq.m :



- K2/8/3.1- hol/hall-9,4m<sup>2</sup>
- K2/8/3.2- wc/toilet-2,9m<sup>2</sup>
- K2/8/3.3- aneks kuch./kitchen annex-6,8m<sup>2</sup>
- K2/8/3.4- pokój dzienny/living room-32,0m<sup>2</sup>
- K2/8/3.5- łazienka/bathroom-8,2m<sup>2</sup>
- K2/8/3.6- pokój/room-23,5m<sup>2</sup>



Investor: ENGEL - APARTAMENTY EMILII PLATER

POLAND, 00-024 WARSAW, ALEJE JEROZOLIMSKIE 44, PHONE: +48 22 433 69 30