

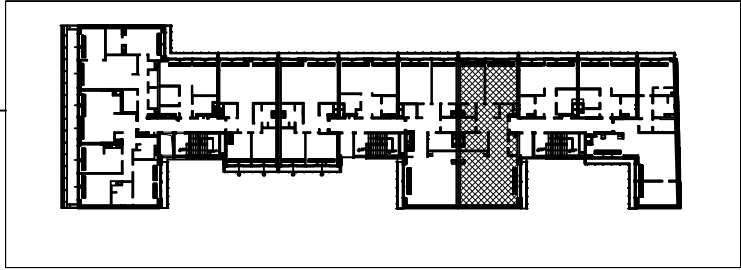
## INVESTMENT: EMILII PLATER-APARTMENTS Emilii Plater 10, WARSAW

lokal numer: K3/2/1  
apartment number

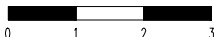
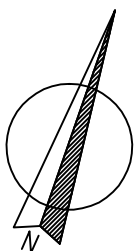
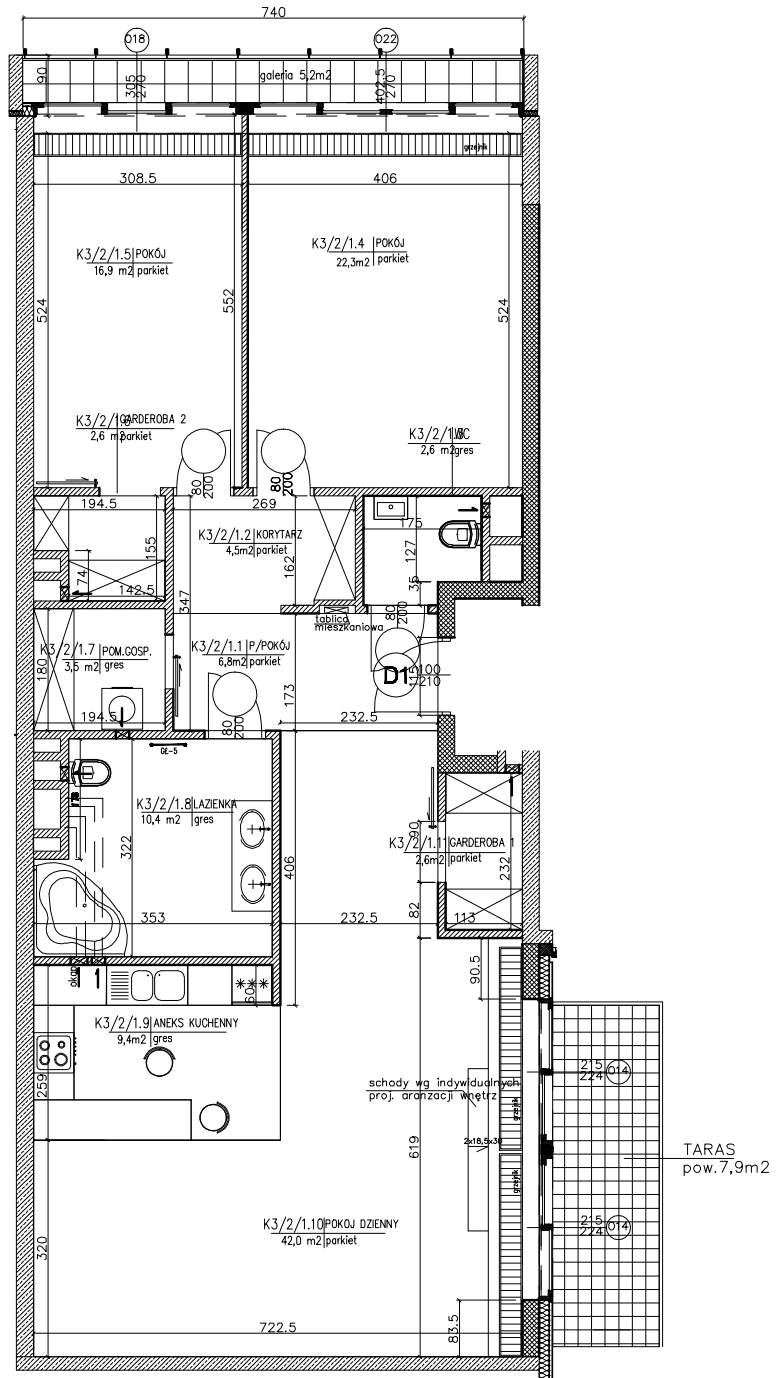
piętro: II  
floor

klątka: 3  
apartment

powierzchnia : 123,60m<sup>2</sup>  
sq.m :



- K3/2/1.1- p.pokój/hall- 18,4m<sup>2</sup>
- K3/2/1.2- pom.gosp./storage- 3,5m<sup>2</sup>
- K3/2/1.3- garderoba/wardrobe- 2,60m<sup>2</sup>
- K3/2/1.4- pokój/room- 16,7m<sup>2</sup>
- K3/2/1.5- pokój/room- 22,3m<sup>2</sup>
- K3/2/1.6- toaleta/toilet- 2,6m<sup>2</sup>
- K3/2/1.7- łazienka/bathroom- 10,4m<sup>2</sup>
- K3/2/1.8- aneks kuch./kitchen annex- 9,4m<sup>2</sup>
- K3/2/1.9- pokój dzienny/living room- 34,9m<sup>2</sup>



**Investor: ENGEL - APARTAMENTY EMILII PLATER**

**POLAND, 00-024 WARSAW, ALEJE JEROZOLIMSKIE 44, PHONE: +48 22 433 69 30**