

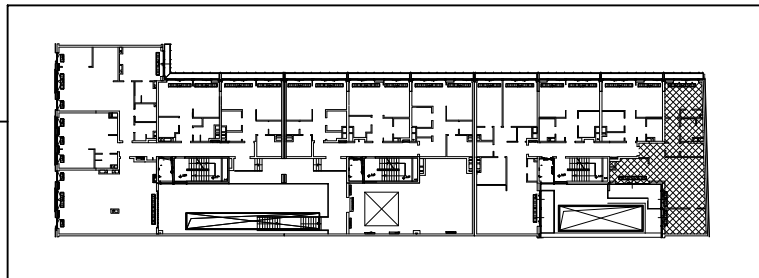
INVESTMENT: EMILII PLATER-APARTMENTS Emilii Plater 10, WARSAW

lokal numer: K3/5/4
apartment number

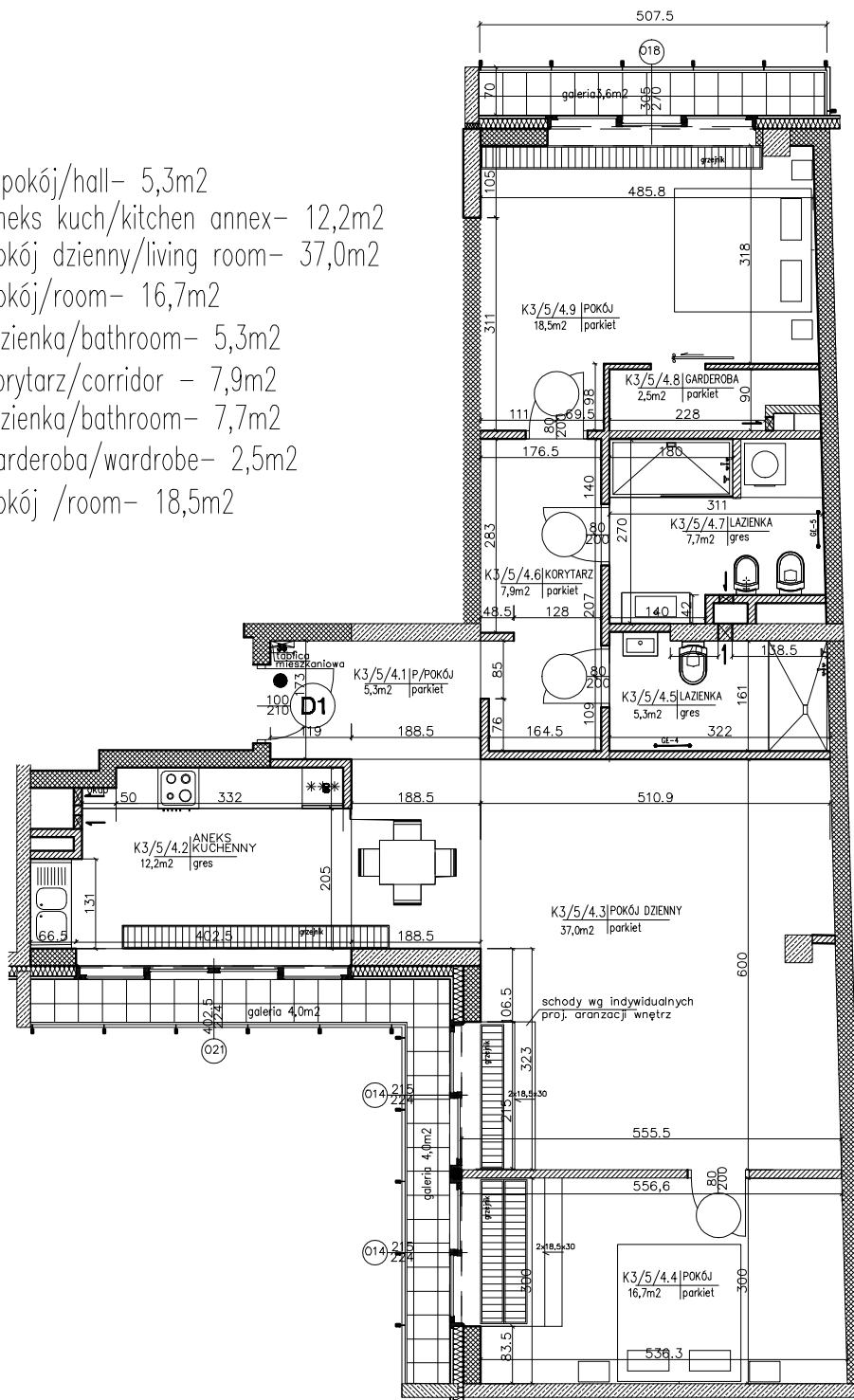
piętro: IV
floor

klauzura: 3
entrance

powierzchnia : 113,10m²
sq.m :



- K3/5/4.1- p.pokój/hall- 5,3m²
- K3/5/4.2- aneks kuch/kitchen annex- 12,2m²
- K3/5/4.3- pokój dzienny/living room- 37,0m²
- K3/5/4.4- pokój/room- 16,7m²
- K3/5/4.5- lazienka/bathroom- 5,3m²
- K3/5/4.6- korytarz/corridor - 7,9m²
- K3/5/4.7- lazienka/bathroom- 7,7m²
- K3/5/4.8- garderoba/wardrobe- 2,5m²
- K3/5/4.9- pokój /room- 18,5m²



Investor: ENGEL - APARTAMENTY EMILII PLATER

POLAND, 00-024 WARSAW, ALEJE JEROZOLIMSKIE 44, PHONE: +48 22 433 69 30