

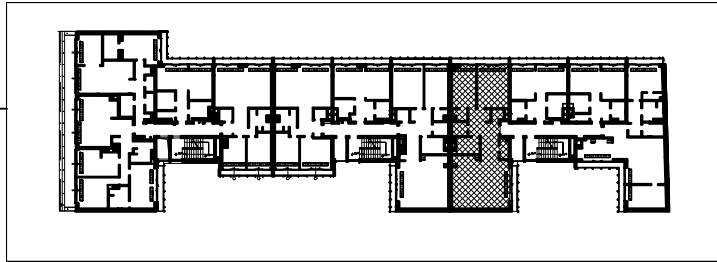
**INVESTMENT:  
EMILII PLATER-APARTMENTS  
Emilii Plater 10, WARSAW**

**lokal numer:** K3/6/1  
apartment number:

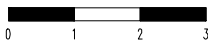
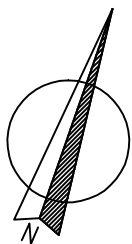
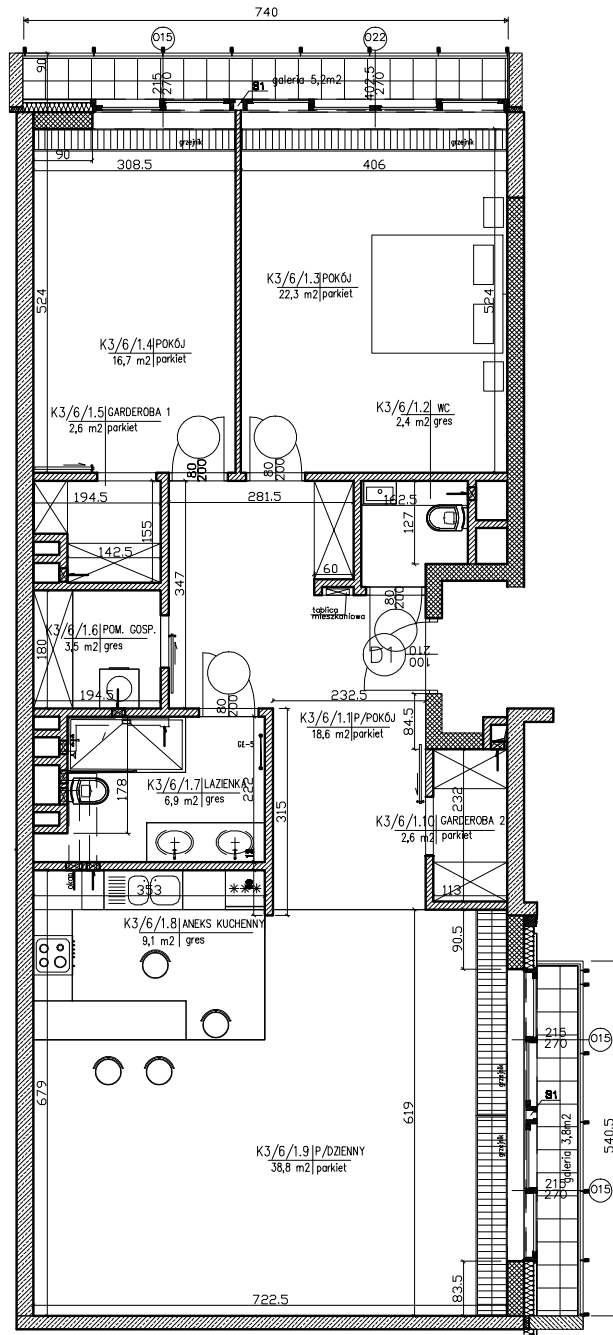
**piętro:** V  
floor:

**klątka:** 3  
staircase:

**powierzchnia:** 123,50m<sup>2</sup>  
sq.mt :



- K3/6/1.1- p.pokój/hall- 18,6m<sup>2</sup>
- K3/6/1.2- toaleta/toilet- 2,4m<sup>2</sup>
- K3/6/1.3- pokój/room- 22,3m<sup>2</sup>
- K3/6/1.4- pokój/room- 16,7m<sup>2</sup>
- K3/6/1.5- garderoba/wardrobe - 2,6m<sup>2</sup>
- K3/6/1.6- pom.gosp/storage - 3,5m<sup>2</sup>
- K3/6/1.7- łazienka/bathroom- 6,9m<sup>2</sup>
- K3/6/1.8- aneks kuch/kitchen annex - 9,1m<sup>2</sup>
- K3/6/1.9- pokój dzienny/livingroom- 38,8m<sup>2</sup>
- K3/6/1.10- garderoba/wardrobe - 2,6m<sup>2</sup>



**Investor: ENGEL - APARTAMENTY EMILII PLATER**

**POLAND, 00-024 WARSAW, ALJE JEROZOLIMSKIE 44, PHONE: +48 22 433 69 30**