

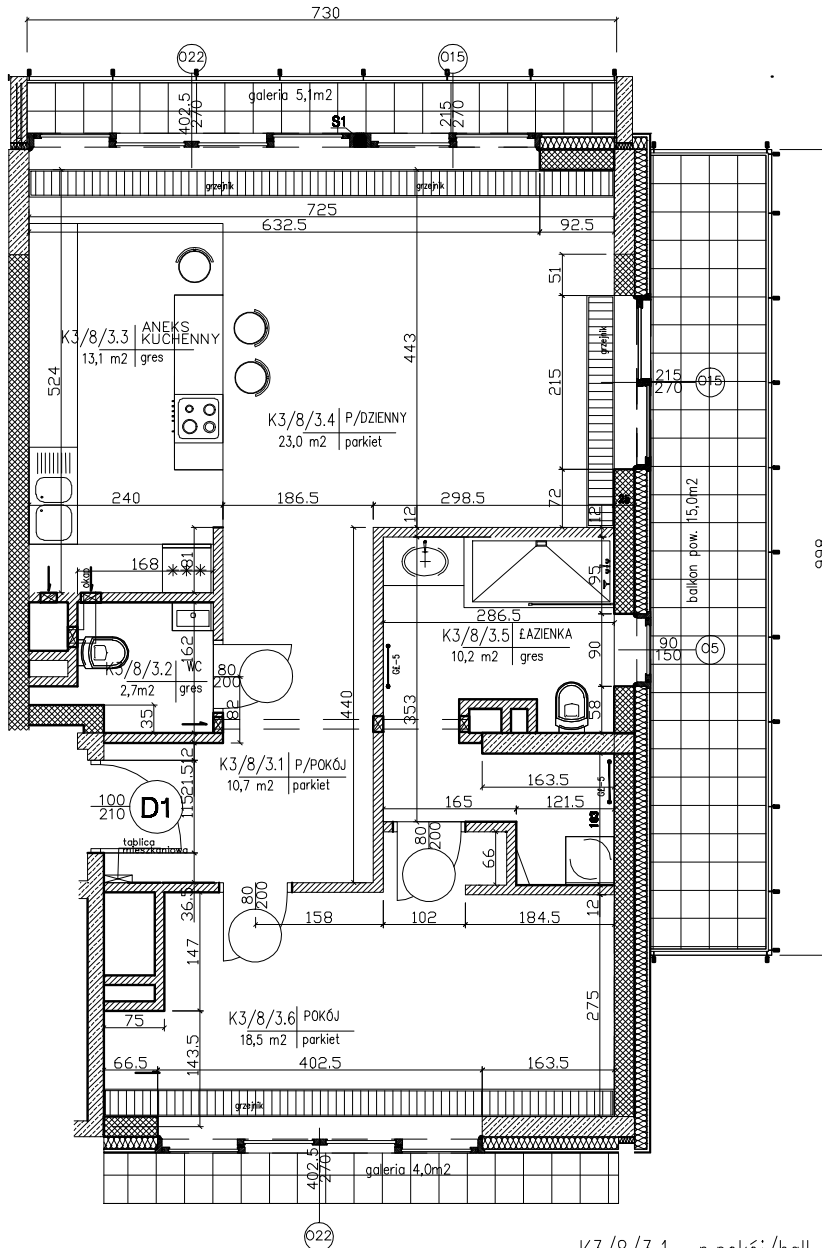
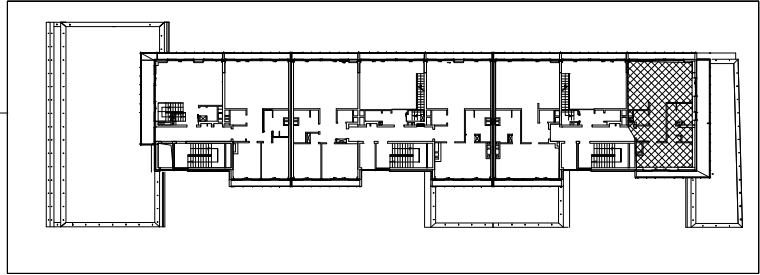
**INVESTMENT:  
EMILII PLATER-APARTMENTS  
Emilii Plater 10, WARSAW**

**lokal numer: K3/8/3**  
apartment number:

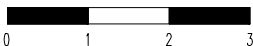
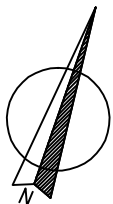
**piętro: VII**  
floor:

**klatka: 3**  
staircase:

**powierzchnia : 78,20m<sup>2</sup>**  
sq.m :



- K3/8/3.1- p.pokój/hall-10,7m<sup>2</sup>
- K3/8/3.2- wc/toilet-2,7m<sup>2</sup>
- K3/8/3.3- aneks kuchenny/kitchen annex-13,1m<sup>2</sup>
- K3/8/3.4- pokój dzienny/living room-23,0m<sup>2</sup>
- K3/8/3.5- łazienka/bathroom-10,2m<sup>2</sup>
- K3/8/3.6- pokój/room-18,5m<sup>2</sup>



**Investor: ENGEL - APARTAMENTY EMILII PLATER**

**POLAND, 00-024 WARSAW, ALEJE JEROZOLIMSKIE 44, PHONE: +48 22 433 69 30**